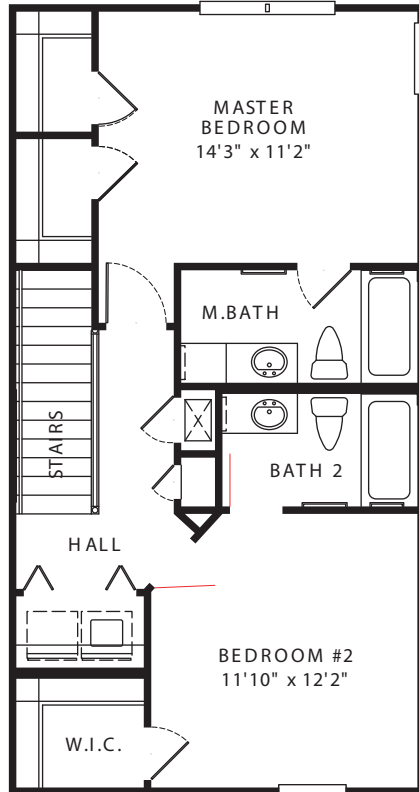
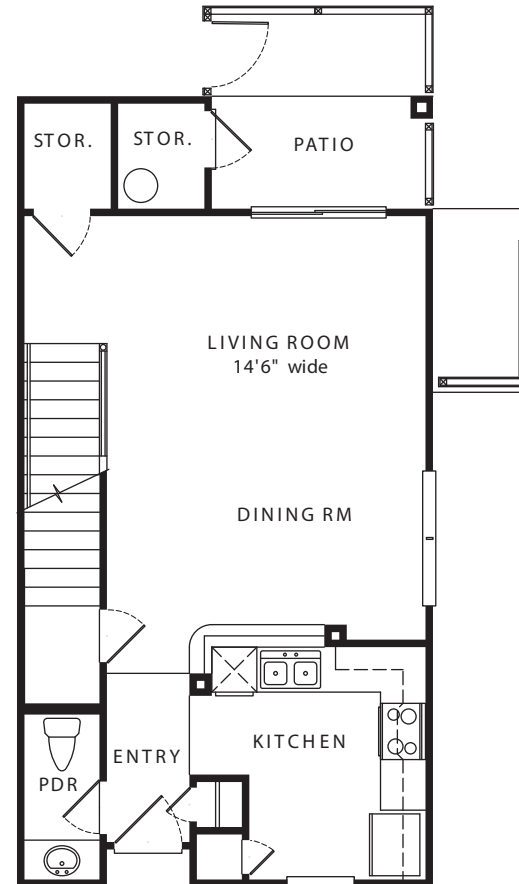




**TOWNHOUSE  
UNIT TYPE D - END UNIT  
2 BEDROOM, 2.5 BATH**



**SECOND FLOOR PLAN  
SQ. FT. = 610**



**FIRST FLOOR PLAN  
SQ. FT. = 574**

**TOTAL SQ. FT. = 1,245  
INCLUDING PORCH AND STORAGE**