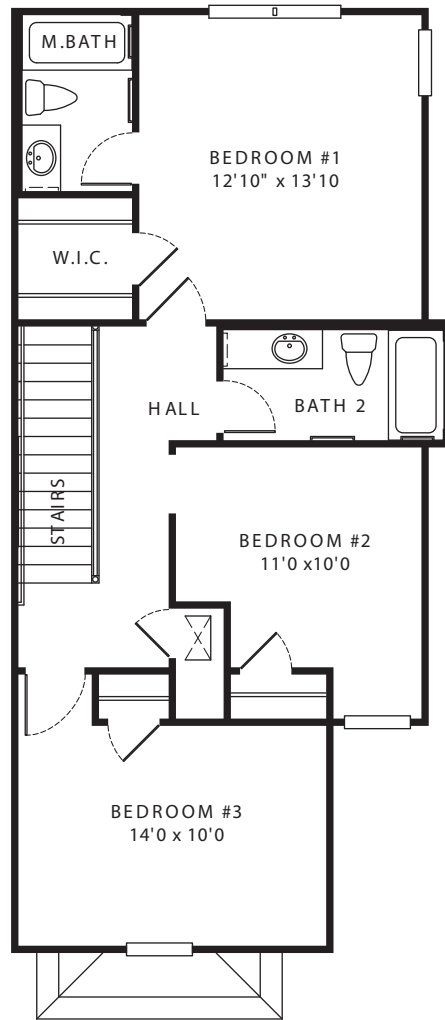
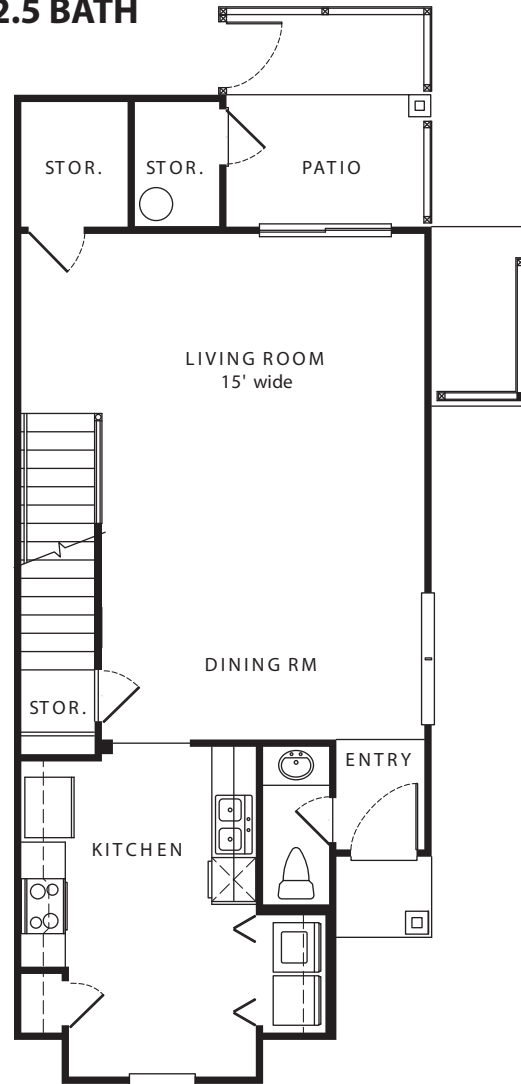




**TOWNHOUSE
UNIT TYPE E - END UNIT
3 BEDROOM, 2.5 BATH**



**SECOND FLOOR PLAN
SQ. FT. = 778**



**FIRST FLOOR PLAN
SQ. FT. = 685**

**TOTAL SQ. FT. = 1,543
INCLUDING PORCH AND STORAGE**